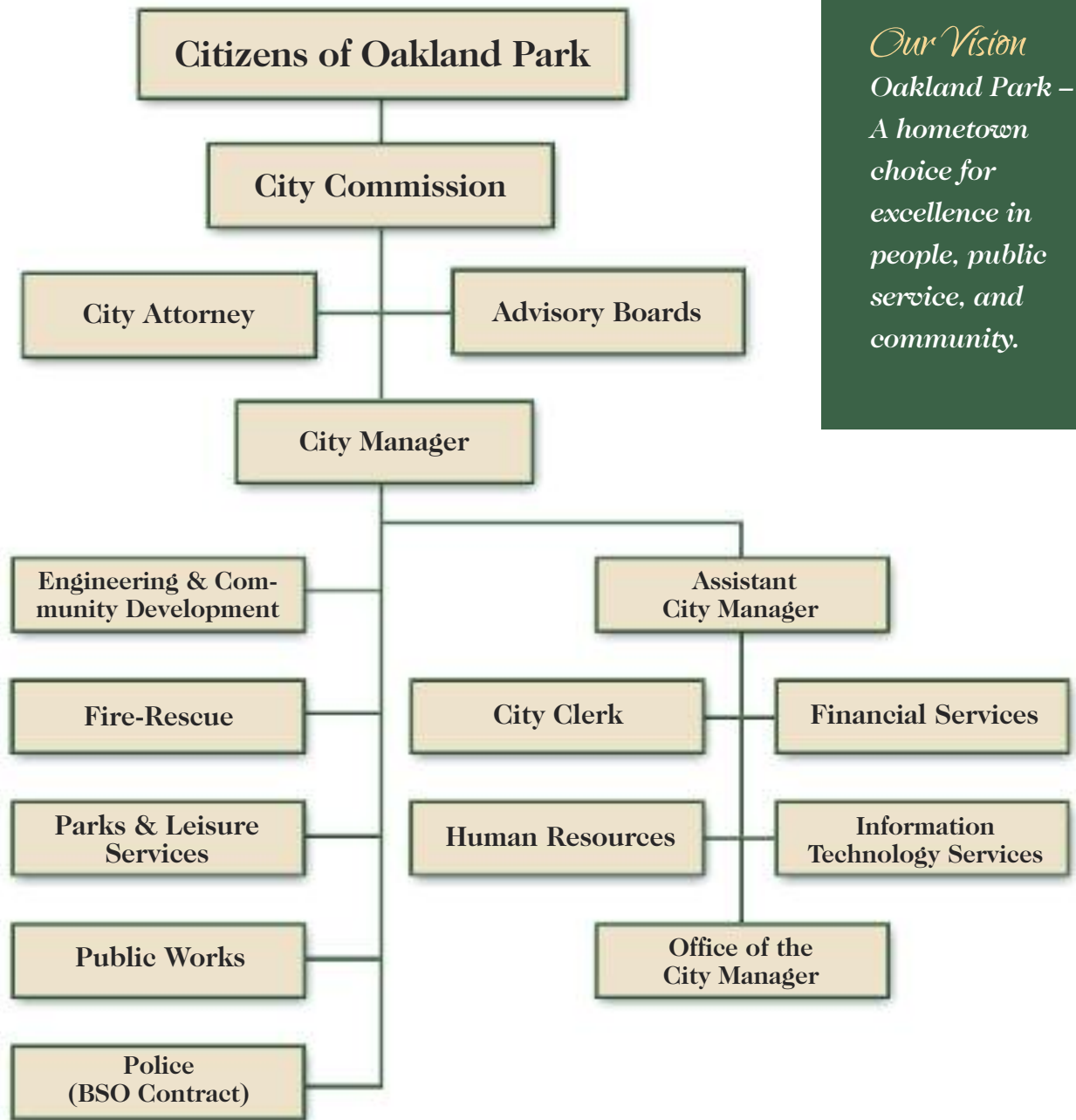


Organizational Chart



Our Vision
 Oakland Park –
 A hometown
 choice for
 excellence in
 people, public
 service, and
 community.

Part of Oakland Park’s Performance Excellence Initiative (PEI) is to promote the development of internal expertise among staff, and foster an environment of professional development at all levels of City services and facilities.

Information is shared and disseminated at each level through inter-departmental and inter-office communication.

The citizens of Oakland Park, along with the 315 (full and part-time) City employees, as well as the 97 BSO deputies and support staff under contract, have an important place in the Organizational Chart. The City takes pride that our diverse mix of employees work in an organized and unified manner for the benefit and well-being of the community as a whole.

OUR MISSION
 We strive every day to deliver – in a friendly, courteous, reliable, and responsive manner – a diverse set of efficient and effective City services that exceed the expectations of our residents, businesses, and employees.